

BULLETIN

SPRING-SUMMER 2026



GRAND PRIZE FOR ENVIRONMENTAL EXCELLENCE

It is with great pride that Appalachian Corridor accepted the Grand prix d'excellence en environnement at the Fondation estrienne en environnement gala on November 13. **This award for biodiversity protection recognized Appalachian Corridor's conservation of the 542-hectare Forêt Brière.** We would like to once again thank Guy Brière for his incredible generosity and for his land donation valued at \$7.4 million.



WE HAVE REACHED 20,000 HECTARES OF PROTECTED PRIVATE LAND!

Appalachian Corridor is proud to announce that it has surpassed 20,000 hectares of protected private land. More than 33,632 hectares are now managed in total (including public protected areas in our territory of action). Our conservation efforts in the Northern Green Mountains are in line with the Government of Quebec's vision to conserve 30% of its territory by 2030, but also to contribute to the worldwide nature conservation goal.

PROTECTED AREAS IN APPALACHIAN CORRIDOR'S TERRITORY

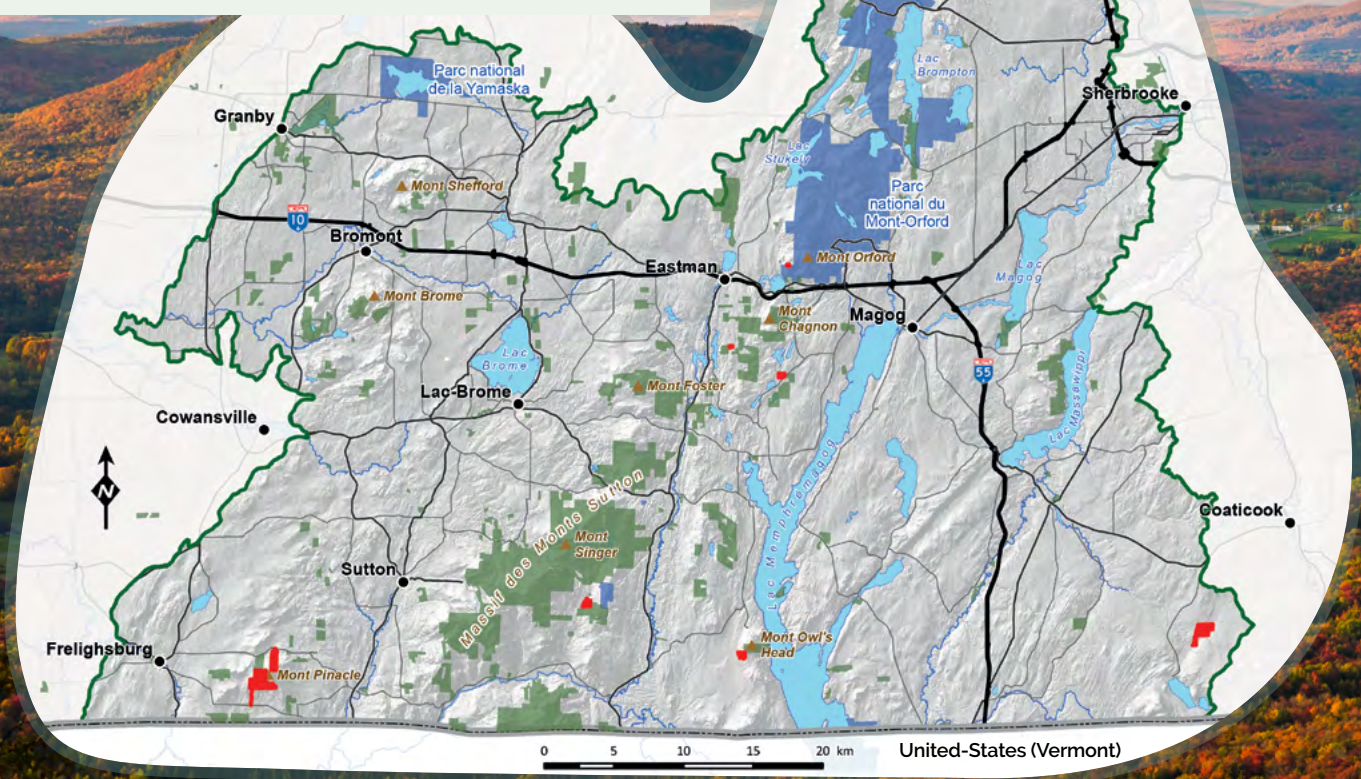
AREA AND PROPORTION OF PROTECTED TERRITORY

Private protected areas
20,298 ha = 5.88 %

Public protected areas
13,334 ha = 3.86 %

Private or public protected areas
33,632 ha = 9.74 %

- New protected areas (private land) in 2025-2026
- Protected areas (private land)
- Protected areas (public land)
- Appalachian's Corridor Territory of Action





HOW TO HELP A TURTLE CROSS THE ROAD

IF YOU NOTICE A TURTLE ON THE ROAD, FOLLOW THESE STEPS TO GET IT TO SAFETY.

- Make sure it is safe for you to pull over on the side of the road and exit your vehicle. Keep an eye out for oncoming vehicles.
- Approach the turtle from behind and grasp it with both hands in the middle of its shell, on either side of its tail. Use gloves if you have a pair with you. Be careful; it can bite.
- Never lift a turtle by the tail! This can cause a serious spinal cord injury.
- Carry the turtle to the side of the road it was heading toward, even if you think the habitat is more suitable on the other side. It knows where it wants to go!
- Don't place the turtle on the side of the road. Instead, put it in the ditch, well away from vehicles.
- Always wash your hands thoroughly after handling a turtle. Turtles can carry bacteria that do not harm them but can cause problems for humans.
- Visit carapace.ca for more information.

Source: Parc Canada



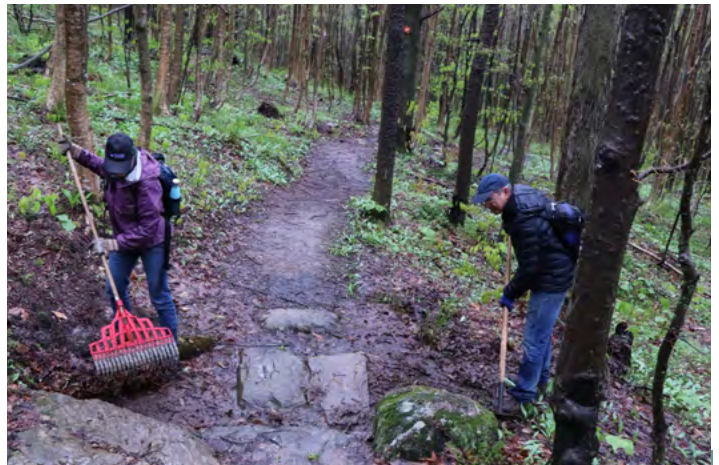
PROMISING RESULTS FOR THE FIRST WILDLIFE CROSSING UNDER HIGHWAY 10

Last November, *Natura* magazine published an in-depth article on the results of the first wildlife crossing under Highway 10. Highway 10 is a major barrier to ecological connectivity and road safety between kilometres 74 and 121. To remedy this, in 2022, Appalachian Corridor developed a connectivity plan aiming to gradually implement wildlife passages and conservation measures over a 20-year period. **Adaptations made to the culvert under exit 115 in Magog show the solution's effectiveness: more than 200 completed wildlife crossings were counted, along with nearly 1,000 likely crossings, confirming that it is possible to reduce collisions while also facilitating the movement of species.** In light of these conclusive results, Appalachian Corridor hopes to work with its partners in order to make Highway 10 plan a showcase project for ecological connectivity in the face of climate change.



TAKE ADVANTAGE OF ACCESS TO OUR TRAILS!

We invite you to **enjoy hiking in nature** in the midst of our protected areas, whether on **Mount Foster**, which you can access for free or with a voluntary donation, or **Mount Singer**, which has an entry fee. We recommend that you always check the accessibility of trails on our website before setting out.



VOLUNTEER!

Love the great outdoors and want to play an active role in protecting these natural areas?

Join our team of volunteers and enjoy nature. If you have any questions or are interested in joining our volunteer patrol program, **write to us at info@corridorappalachien.ca**



CAP EN NATURE'S CHALLENGE

Appalachian Corridor is proud to highlight its partner, CAP en nature, as it launches the 2026 edition of its **Photo Marathon** throughout the month of April. We invite you to step outside and reconnect with nature across the Appalachian Corridor's territory through this inspiring Nature Challenge. All month long, **immerse yourself in the breathtaking landscapes and remarkable biodiversity** that make our region so unique. Follow along on social media, Facebook and Instagram, as we celebrate the beauty, vitality, and richness of our natural environments. We will share their adventure!



NEARLY 235 MORE HECTARES OF PROTECTED NATURAL AREAS

SEVEN NEW PROTECTED AREAS TOTALLING NEARLY 235 HECTARES WERE RECENTLY ADDED TO ESTRIE'S NATURAL AREA CONSERVATION NETWORK, THANKS TO APPALACHIAN CORRIDOR'S COLLABORATION WITH ITS AFFILIATES MEMBERS, ITS FUNDING PARTNERS AND COMMITTED PRIVATE LANDOWNERS.

Carried out between the end of 2025 and the beginning of 2026, these important projects strengthen the territory's ecological connectivity, protect many species in precarious situations and contribute to the long-term preservation of natural areas of great ecological value.

These new protected areas are located in Ayer's Cliff, Mansonville, Coaticook, Frelighsburg and Austin. Appalachian Corridor carried out the conservation projects with the help of its affiliated members: Massawippi Conservation Trust, Conservation des vallons de la Serpentine, Fiducie foncière du mont Pinnacle (FFMP) and The Ruiter Valley Land Trust.

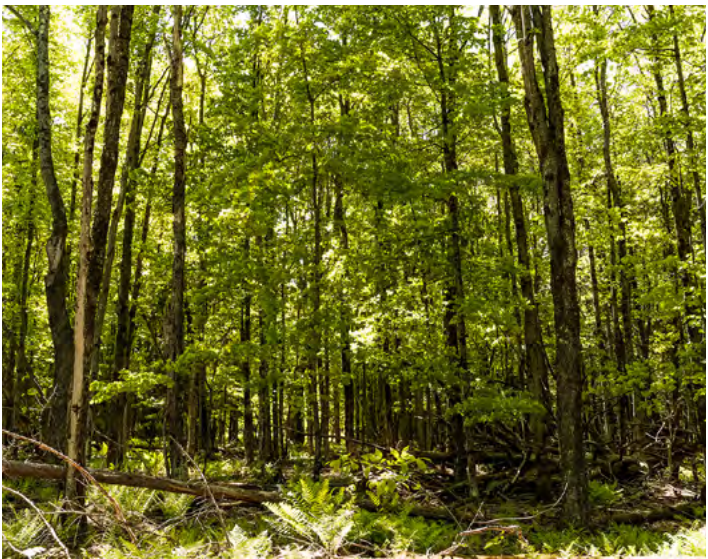
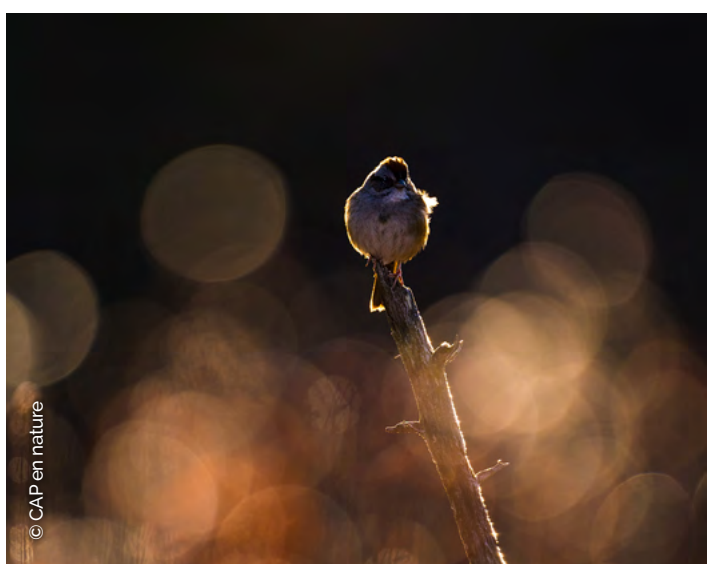
The Bouchard protected area accounts for 86.5 hectares of natural areas, and the land donated by Yvonne Bouchard is valued at \$275,000. Land donated for the new 18-hectare de la Terredes-Générationes protected area, by Laurence Côté-Leduc, Luka Martineau McEniry and Marie-Claude Leduc, is valued at \$140,000. A conservation easement of 11.99 hectares was confirmed, associated with a donation by André Cadotte valued at \$290,000. And finally, the 21.4-hectare de la Ferme-Newell area is associated with a donation valued at \$160,000.

Mr. Favreau donated the full title to a 2.75-hectare plot of land. He is now protecting 11.88 hectares of natural area in perpetuity. The donation associated with this project is estimated at \$200,000.

These projects demonstrate **THE VALUE OF QUEBEC'S VOLUNTARY CONSERVATION MODEL** and the exemplary leadership shown by the donor landowners. Their contribution makes the regional ecosystems more resistant and helps pass down invaluable natural heritage to the next generations.

In addition, 50 hectares of natural habitat have been permanently protected through the acquisition of des Hauts-Ruisseaux property by the Fiducie foncière du mont Pinnacle (FFMP). A further 37.95 hectares of natural environments at Lac Parker have also been secured with an associated donation worth \$285,000.

THESE CONSERVATION PROJECTS BENEFITED FROM LANDOWNER DONATIONS WITH A COMBINED VALUE OF MORE THAN \$1,350,000. APPALACHIAN CORRIDOR SINCERELY THANKS THE OWNERS FOR THEIR IMPORTANT CONTRIBUTION TO BIODIVERSITY CONSERVATION. THANK YOU TO ALL OUR DONORS.

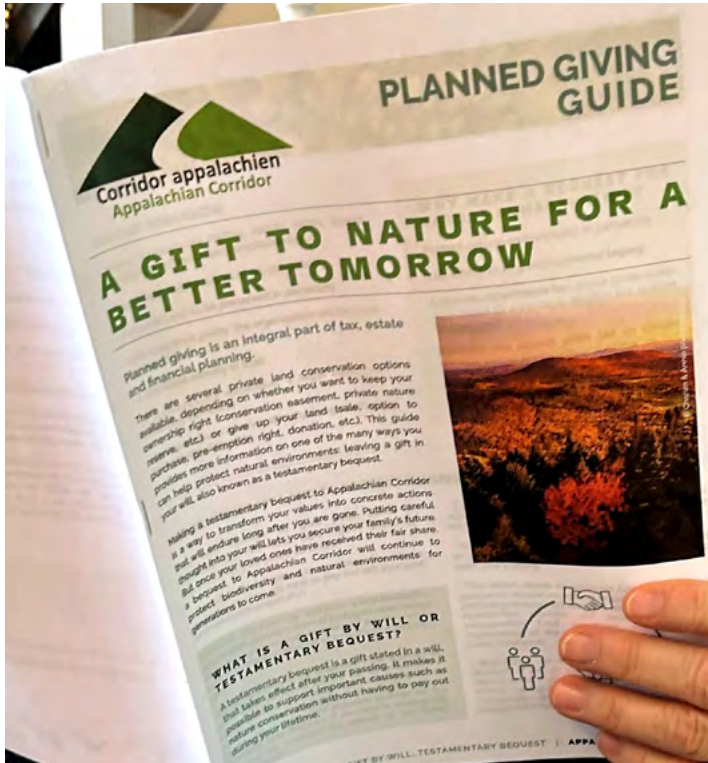


BEST PRACTICES TO PREVENT FOREST FIRES

Several hundred to several thousand forest fires occur in Quebec and Canada each year. The number of hectares ravaged varies greatly, depending on weather conditions and on whether the cause was natural or by humans. Forest fires are a major risk to the environment, property and human lives, but they can often be prevented through responsible actions. **It is very important to never light a fire in a wooded area or near vegetation, to avoid throwing cigarette butts on the ground and to strictly follow municipal fire restriction advisories, especially in times of drought.** Work that could cause sparks must be performed very carefully, and plant waste must never be burned in an open-air fire. By adopting these best practices and staying vigilant, everyone can actively help prevent forest fires and protect our natural heritage.

APPALACHIAN CORRIDOR'S NEW PLANNED GIVING GUIDE IS NOW AVAILABLE!

Planned giving is part of an overall approach to tax, estate and financial planning. Among the private land conservation options available, a gift by will is a concrete way to help protect natural areas. **By making a testamentary bequest to Appalachian Corridor, you can transform your values into lasting actions while securing your family's future and supporting the preservation of biodiversity for generations to come—without having to pay out during your lifetime.** To learn more, Appalachian Corridor recommends reading its brand-new planned giving guide (**available at corridorappalachien.ca/documents**).





MAKE A DONATION AND HELP PROTECT NATURE

Did you know that nearly all donations are redirected to the protection of natural environments? Your generosity has a direct and tangible impact on our conservation efforts.

You can also choose to make a monthly donation and support our actions on a regular basis. A small gesture each month can make a big difference in preserving our environment in the long term.

Take action today to protect our natural heritage.

To make a one-time or monthly donation:

appalachiancorridor.ca/en/make-a-donation



ATTEND our immersive activities and talks!

Activities offered on a VOLUNTARY DONATION basis

Dive into the world of conservation at one of Appalachian Corridor's immersive activities. Whether attending a talk or an outdoor activity, you can learn while connecting with nature.



DISCOVER THE ACTIVITIES PLANNED:

June 19, 2026 | The Decline of Pollinating Insects and Aerial Insectivores: How to Help Them; at Espace Hors Champs, Austin

July 16, 2026 | Conference on Bat Conservation

August 1, 2026 | Theme to be announced

September 11, 2026 | Write Mindfully in Nature

October 24, 2026 | Talk: Gain a Better Understanding of the Geology of the Green Mountains

November 6, 2026 | Webinar: Discover Nature Conservation Options



*NOTE THAT ALL ACTIVITIES ARE IN FRENCH

Register on our website: corridorappalachien.ca/en/events

appalachiancorridor.ca

ISSN 1708-1645 | Printed on Enviro 100 recycled paper

Legal deposit: Library and Archives Canada and
Bibliothèque et Archives nationales du Québec



THANKS TO OUR FUNDERS AND PARTNERS

The Government of Quebec: Southern Quebec Conservation Acceleration Program (ACSQ), managed through the Nature Conservancy of Canada, the Ministry of the Environment, Climate Change, Wildlife and Parks (MELCCFP) and the Ministry of of Employment and Social Solidarity. The Government of Canada: Environment and Climate Change Canada, Community-Identified Priority Areas (CIPA), the DEFI program managed through Nature-Action Québec, and the Canada Summer Jobs program. Other partners include: the Quebec Wildlife Foundation, Ducks Unlimited Canada, MapleCross Foundation, the U.S. Fish & Wildlife Service through the NMBCA program, the Echo Foundation, Hydro-Québec, Protection des oiseaux Québec (POQ), EcoCanada, the Quebec Turtle Recovery Team, the Lake Champlain Basin Program, Aventure Écotourisme Québec with 1% for the Planet, La Caisse (Caisse de dépôt et placement du Québec), the municipalities of Austin, Eastman, Bolton-Est, Bolton-Ouest, Saint-Étienne-de-Bolton, Canton de Potton, and Austin, as well as numerous private donors.