


17,000 HECTARES OF PROTECTED NATURAL ENVIRONMENTS ON PRIVATE LAND IN OUR TERRITORY OF ACTION




©Charles Dion


THIS MILESTONE HAS BEEN REACHED THANKS TO THE WORK OF NUMEROUS CONSERVATION GROUPS, COMMITTED LANDOWNERS AND NUMEROUS PARTNERS, AGAINST A BACKDROP OF SIGNIFICANT DEMOGRAPHIC AND REAL ESTATE PRESSURES.

A FEW HIGHLIGHTS FROM THE APPALACHIAN CORRIDOR ACTION TERRITORY:

 **28,855 hectares** (71,302 acres) of protected areas
 · 11,855 hectares (29,294 acres) of land / National Parks
 · 17,000 hectares (42,008 acres) private land


 An **ecological corridor** for the movement of many species travelling northward, due to climate change

 Increased knowledge of the issues at stake, species and ecosystems of our territory, **based on science**


 More than **325 ecological evaluations** produced by Appalachian Corridor since 2002

 **25** Protected areas acquired **over the past 25 years only**

 Over **270 conservation projects** completed, on as many properties

 **20 peaks** over 700 m in altitude and **5500 km of rivers** in our territory

 **80 species** in precarious situation found in these protected areas

 **20** : The largest concentration of conservation organizations working in the same area

These conservation actions not only protect biodiversity, but also help to make our natural environments more resilient, fight climate change and improve the communities' health and quality of life.

For all these reasons, THANK YOU FOR TAKING PART IN THESE EFFORTS.



Historic funding FOR CONSERVATION IN SOUTHERN OF QUEBEC

Appalachian Corridor welcomes the recent investments announced by the Quebec government through the *Accélération de la conservation dans le sud du Québec* (Accelerating conservation in southern Quebec -ACSQ) program of the Ministère de l'Environnement, de la Lutte contre les changements climatiques, de la Faune et des Parcs (MELCCFP).

This financial assistance of \$144.1 million, granted to the Nature Conservancy of Canada and its partners is intended to act as an "accelerator" for natural environments conservation in southern Quebec.

Appalachian Corridor is proud to be one of the major partners in this agreement, which will contribute to achieving the COP15 objectives, as well as the Nature Plan, such as protecting 30% of the territory and reversing the loss of biodiversity by 2030.



©Benoit Vermette

Mélanie Lelièvre (General Manager - Appalachian Corridor), **Brice Caillé** (General Manager - Réseau de milieux naturels protégés), **Benoit Charette** (Minister of MELCCFP), **Claire Ducharme** (Vice-Présidente - Nature Conservancy of Canada), **Pascal Bigras** (General Manager - Nature-Action Québec) and **Sébastien Rioux** (Director of Regional Operations - Ducks Unlimited Canada) came together to hold "Accélération de la conservation dans le sud du Québec" to highlight the urgent need to act to protect biodiversity and its habitats. The announcement of this recent provincial funding is a direct response to this call.



©Charles Dion

A 4th conservation project BY MR. CHARLES WELDON AND HIS WIFE

This magnificent 8-hectare (20 acres) property, located in a core habitat and home to a great diversity of flora, characteristic of our region's rich forests, is now protected in perpetuity on the western slopes of the Monts Sutton massif, in the municipality of Sutton.

Committed to conservation for over 25 years, the protection pioneer Charles Weldon is no stranger to conservation. In fact, in addition to having contributed to 4 conservation projects as an owner-donor, Mr. Weldon is a founding member of Mount Echo Conservation Association (MECA).

Thank you to Mr. Weldon and his wife, Lydia Gagnon, for their generous donation and outstanding overall contribution to the advancement of conservation in the Montagnes-Vertes.

12 YEARS OF TRUST LEAD TO THE PROTECTION OF 24 HECTARES OF NATURAL ENVIRONMENTS IN BOLTON-EST

Appalachian Corridor and Conservation des vallons de la Serpentine (CVS) are proud to announce the protection in perpetuity of a biodiversity-rich environment in the heart of a core habitat not far from Mount Chagnon.

A bond of trust was forged between CVS and owner Mrs. Renée Brien Dandurand over 12 years ago. The various voluntary conservation options were considered, including a conservation easement, before Mrs. Brien, together with her children, finally chose to donate part of her land through an ecological gift to her local organization.

Our warmest thanks go to Mrs. Brien Dandurand and her children Valérie and Thomas for their generous donation, which represents a legacy for future generations. This area is in addition to the 445 ha (1100 acres) already protected by CVS in the Serpentine Creek watershed.



Brien Dandurand family at the project celebration, accompanied by representatives from CVS and Appalachian Corridor.

©Conservation des vallons de la Serpentine



©Appalachian Corridor



A WHOLE NEW DIMENSION IN OF SPECIES ON OUR TERRITORY: **INSECTS!**

The fauna and flora of our territory no longer hold many secrets for our team of biologists, but we know very little about the diversity of insects. So it was time to take a closer look at this aspect of biodiversity.

New for summer 2024: **Appalachian Corridor begins a first phase of the region's dragonflies, butterflies and bumblebees inventory.** It is important to get to know them better to protect them, as many are in a precarious situation, such as the Eastern Pondhawk presented here. Want to get involved? Share your findings by uploading photos taken this summer on the **iNaturalist** application.

Big or small, every species has its place in the balance of our ecosystems.



Eastern Pondhawk

©Melissa McMasters



©Victor Grivegnée-Dumoulin

The most common species at feeders in the Eastern Townships are: the Black-capped Chickadee, the American Goldfinch, the Cardinal Blue Jay and White-breasted Nuthatch.

The rarest species, but increasingly present, are : the Carolina Wren and Red-bellied Woodpecker.

The best times to observe birds at your feeders are during spring migration (March to May) and autumn (late August to October).

Source: audubon.org/field-guide/bird/white-breasted-nuthatch

TO FEED OR NOT TO FEED BIRDS?

Our team of biologists answers this recurring question. Feeding birds is possible, but it must be done with certain criteria in mind:



Clean feeders every two to four weeks with soapy water or vinegar

Remove feeders for a few weeks if you observe a sick bird



Feed quality seeds (ideally black sunflower)

Don't be afraid to forget to fill your feeders for a long period of time. Birds are used to having food sources that vary over time.



(From left to right) **Pierre Bonneau** (Editor of Nature sauvage); **Philippe Di Pietrantonio** (Conservation Advisor); **Benoit Talbot** (Geomatics Manager); **Stéphanie Latour** (Spokesperson for Protection Mont-Gale); **Juliette Larrivée** (Protected areas management technician); **Clément Robidoux** (Conservation director); **Mélanie Lelièvre** (General Manager); **Vincent Hamann-Benoît** (Protected areas management technician); **Marie-José Auclair** (President); **Frédérique Vuillemoz** (Communications Coordinator) and **Pierre Hamel** (Publisher Nature sauvage magazine).

APPALACHIAN CORRIDOR HONoured AT THE CONSERVATION AWARDS GALA NATURE SAUVAGE

It was with great emotion that we received the **Prix de l'acquisition de l'année** at the first edition of this event, held on April 2 in Quebec City.

Awarded to an organization that has worked to acquire a territory of great ecological value, the prize was awarded for the project concluded on Mount Gale in April 2023. It should be remembered that 1 year ago, we announced with the Protection Mont-Gale citizens' group, the protection in perpetuity of 14.04 hectares in Bromont's popular Mont Gale area.

Thanks to Nature sauvage magazine, Nature Québec, the Fondation de la faune and the Réseau de milieux naturels protégés for this first edition of the Gala. Congratulations to the other winners: Audréanne Loiselle (Prix de la relève) and the Coalition des Montérégiennes (Initiative of the Year Award).

BECOME A VOLUNTEER

DO YOU ENJOY USING OUR TRAIL NETWORKS?

We're currently looking for volunteer trail patrollers for our Mount Foster and Mount Singer trails.

What's involved? Volunteer patrollers play the role of ambassadors for our protected areas, with the aim being to harmonize between the presence of hikers and the vocation of the conservation of these fragile natural environments. What better way to make your outdoor outings even more rewarding!

If you are interested, please contact Vincent:
vincent.h.benoit@corridorappalachien.ca



©Appalachian Corridor.



WHO IS APPALACHIAN CORRIDOR?

We are a non-governmental organization with charitable status created in 2002, and our territory of action is in the Northern Green Mountains, a segment of the greater Appalachian region.

Our Mission. To consolidate and leave as a legacy a vast corridor of protected natural areas in perpetuity.

Our Vision. In response to climate and ecological crises, to promote global awareness of biodiversity and increase the number of protected areas, setting the benchmark in conservation and ecological land management.

OUR PROJECTS ARE BASED ON SCIENCE AND HAVE A REAL IMPACT ON NATURE.

A major conservation organization in Quebec, our team includes some twenty regular employees, as well as the contribution of some fifteen interns and technicians during the summer months. Our unique organizational model promotes support for local conservation organizations, generating a powerful synergy, central to the success of conservation actions in the Green Mountains.

appalachiancorridor.ca

ISSN 1708-1645 | Printed on Enviro 100 recycled paper

Legal deposit: Library and Archives Canada and Bibliothèque et Archives nationales Québec

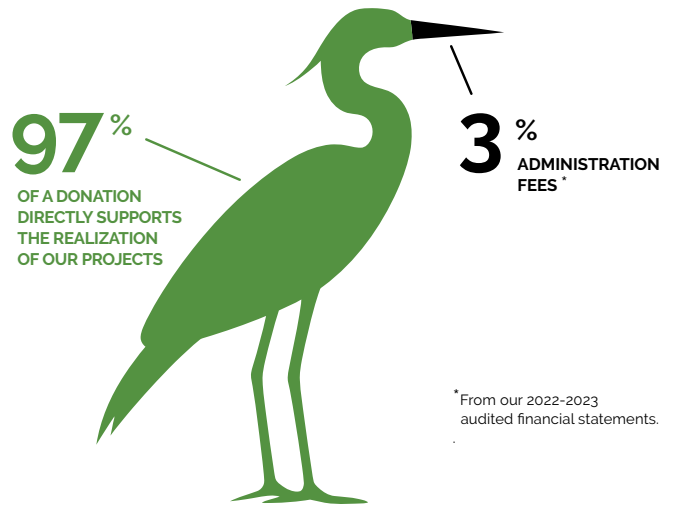


MAKE YOUR ANNUAL CONTRIBUTION!

Did you know that you can sign up for an automated donation every month? An increasing number of donors choose this easy, automatic and predictable option. Every small amount really does make a difference.

Donate online: corridorappalachien.ca/make-a-donation

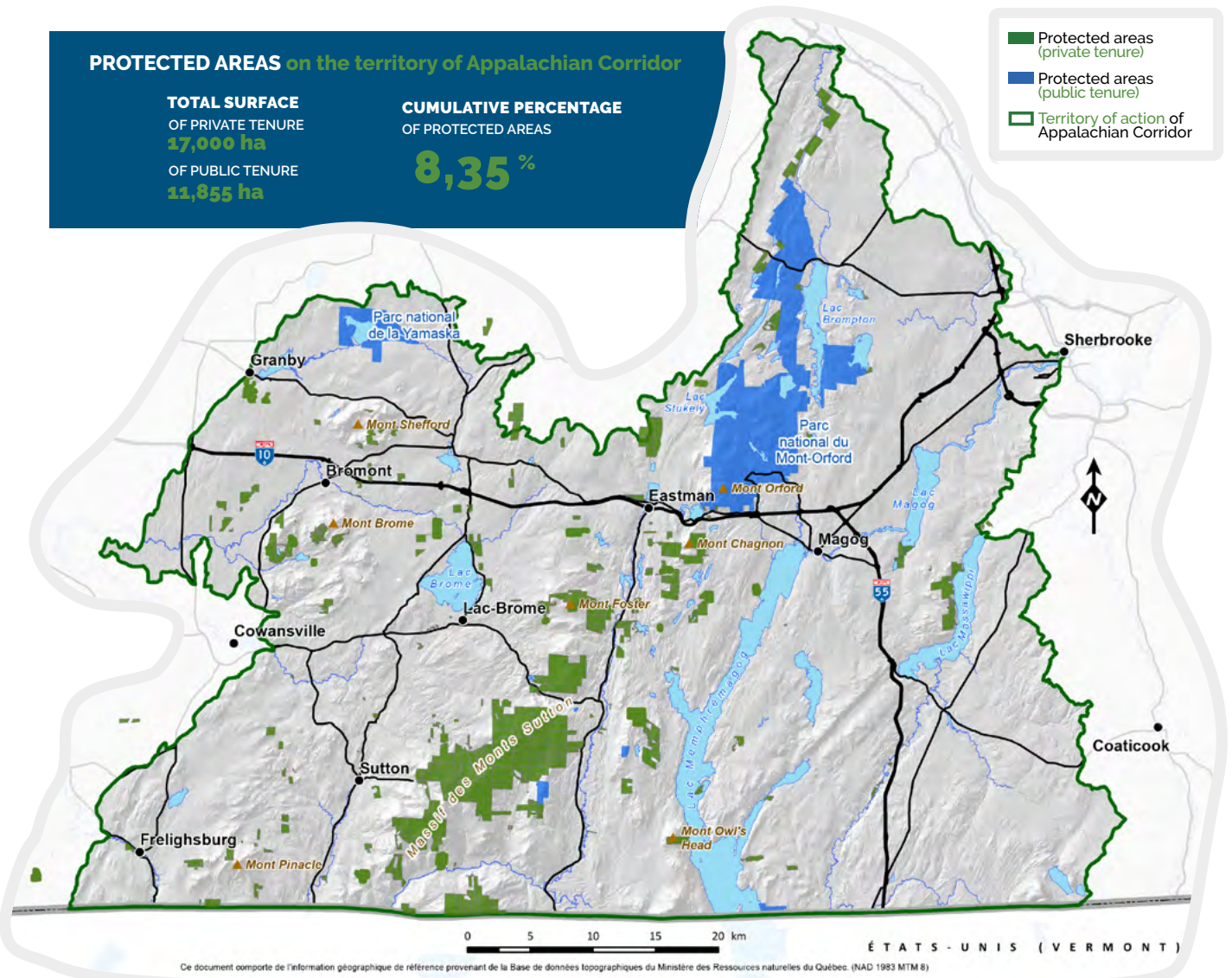
You'll receive a receipt for your entire donation at the end of the year. It is possible to withdraw from this donation method at any time.



PROTECTED AREAS on the territory of Appalachian Corridor

TOTAL SURFACE OF PRIVATE TENURE **17,000 ha**
OF PUBLIC TENURE **11,855 ha**

CUMULATIVE PERCENTAGE OF PROTECTED AREAS **8,35%**



THANK YOU TO OUR FUNDERS AND PARTNERS

Government of Canada: Environment and Climate Change Canada, Natural Heritage Conservation Program managed through the Nature Conservancy of Canada, Community Designated Priority Sites, the DEFI program managed through Nature-Action Québec, and the Summer Jobs Canada program. Government of Quebec: Projet de partenariat pour les milieux naturels (PPMN) managed through the Nature Conservancy of Canada, Programme Action-Climat Québec, Équipe de rétablissement des tortues du Québec, Ministère de l'Environnement, de la Lutte contre les changements climatiques, de la Faune et des Parcs (MELCCFP), Fondation de la faune du Québec, Ducks Unlimited Canada, MapleCross Foundation, U.S. Fish & Wildlife Service through the NMBCA program. Echo Foundation, Hydro-Québec, Protection des oiseaux Québec (POQ), Wildlife Habitat Canada, EcoCanada, New England Interstate Water Pollution Control Commission (NEIWPCC), Lake Champlain Basin Program, Équipe de rétablissement des chauves-souris du Québec, Ville de Bromont, municipalities of Eastman, Bolton-Est, Bolton-Ouest, Saint-Étienne-de-Bolton, Potton Township, Austin, as well as numerous private donors.